

Safe Space

PLEDGE

GUIDE





Contents

| | |
|--|----|
| <i>Background</i> | 3 |
| <i>What is UAWG?</i> | 4 |
| <i>The need for Safe Spaces</i> | 5 |
| <i>How the pledge was designed</i> | 5 |
| <i>The Pledge</i> | 6 |
| <i>Training</i> | 7 |
| <i>Become a Safe Space venue</i> | 8 |
| <i>How the pledge is managed</i> | 9 |
| <i>Can't meet all the commitments?</i> | 9 |
| <i>Safe Space Pledge Pack</i> | 10 |
| <i>Support</i> | 11 |

Background

In 2021 the Consent Coalition facilitated several consultation and engagement groups with local women's groups and specialists in Nottingham's sexual violence and domestic abuse sector. The groups captured the views and voices of women, who had experienced violence and harassment in the Nottingham city at night.

In addition to the engagement groups, a survey was shared across Nottingham to find out how safe women felt in Nottingham's night-time economy.

The conversations and feedback demonstrated that more needed to be done around raising awareness of consent and improving the availability of safe spaces and trained staff within venues.

Using this research and in consultation, the Consent Coalition and Nottingham's Business Improvement District - It's in Nottingham, created the Safe Space Pledge.

We looked at:

- Venue environment
- Qualified staff
- Disclosures
- Evidence
- Challenging behaviour
- Bystander intervention



Our Pledge

The pledge is made up of eight actions and commitments venues can take to improve the safety of women and girls. It is managed by It's in Nottingham and any venue in Nottingham City can sign up to the pledge, including those who are not licensed to sell alcohol.

What is VAWG?

Violence Against Women and Girls (VAWG) is an umbrella term used to describe violence and abuse which is typically aimed at women.

VAWG can include:

- Sexual violence and abuse
- Sexual harassment
- Domestic violence and abuse
- Stalking
- Honour-based violence
- Female Genital Mutilation

In addition to these abuses, myths and victim blaming narratives can make it difficult for women to get help or feel like they would be believed.

While these abuses can also be experienced by males, they are mainly directed at women. Through acknowledging the gendered aspect of these crimes, we are able to consider the wider social setting, how that enables such abuse to happen and what can be done to change it.

Concern about VAWG and how to prevent violence or fear of violence is central to the Safe Space Pledge's existence.

Victim blaming might sound like:

Women who are out at night should expect to be approached

Women who dress a certain way are asking for it!

If you weren't in that state this wouldn't have happened

Support information for survivors of these crimes, regardless of gender, can be found on the back page of this booklet.



The need for Safe Spaces

Through the survey findings, research and consultation with women, it became clear that there was a need for safe spaces in Nottingham.

While not all women have experienced abuse, news reports, stories from peers, as well as VAWG statistics meant that many women were worried that they might become unsafe in the city, particularly at night.

By creating a network of safe spaces, women can feel empowered to go out at night, with the knowledge that if they feel unsafe, they can ask for help and get support in a safe space.

How the pledge was designed

The pledge was designed to include meaningful actions that venues would take to ensure that they were actively promoting women's safety.

These included training of staff, being prepared to have a designated 'safe space' and agreeing to yearly audits to make sure the pledge was being met.

The pledge is managed by
It's in Nottingham
and supported
by the
Consent Coalition.

We pledge:

1

We are committed to **keeping women safe** in our venue – it's all about having a great night out.

2

Our staff are trained to **respond and intervene** if women feel unsafe in our venue.

3

We always take any **reports** of sexual harassment, violence, or intimidation seriously and take appropriate action.

5

We have **two champions** in our venue who lead on women's safety.

6

We **display information** about what people can do if they feel unsafe in our venue.

4

We have a **safe space** where our staff can offer non-judgemental support to women who don't feel safe.

7

We will always follow the most up-to-date **Safe Space pledge** and proudly display it in our venue.

8

We do not tolerate **harmful language, behaviour, or attitudes** towards women in this venue.

Training

Equation are specialist providers of violence against women and girls training in Nottingham. They provide free training to all venues signing up to the safe space pledge.

The training can be accessed in-person, online or via an eLearning package.



The training covers a variety of topics :

- What is VAWG
- Myths, stereotypes and judgemental attitudes
- Understanding consent
- Bystander intervention and intervening safely
- Risks & Impact
- Creating safe spaces in venues
- Signposting and referrals to support services

MORE FUN

PARTY ROOM



MORE GAMES

VIDEO

Become a Safe Space Pledge Venue

Over 100+ venues have already taken the pledge, including bars, clubs, hotels, shops and transport operators

Nottingham is the first city in the country to embed the Safe Space Pledge within the Best Bar None accreditation. This means that any venue wanting to be accredited under the Best Bar None scheme for Nottingham must also undertake and implement all points of the Safe Space Pledge.



Venues who don't supply alcohol or who are not signed up to Best Bar None can still make the pledge and access the free training and resource packs.

This can be done by contacting It's in Nottingham directly www.itsinnottingham.com/contact/

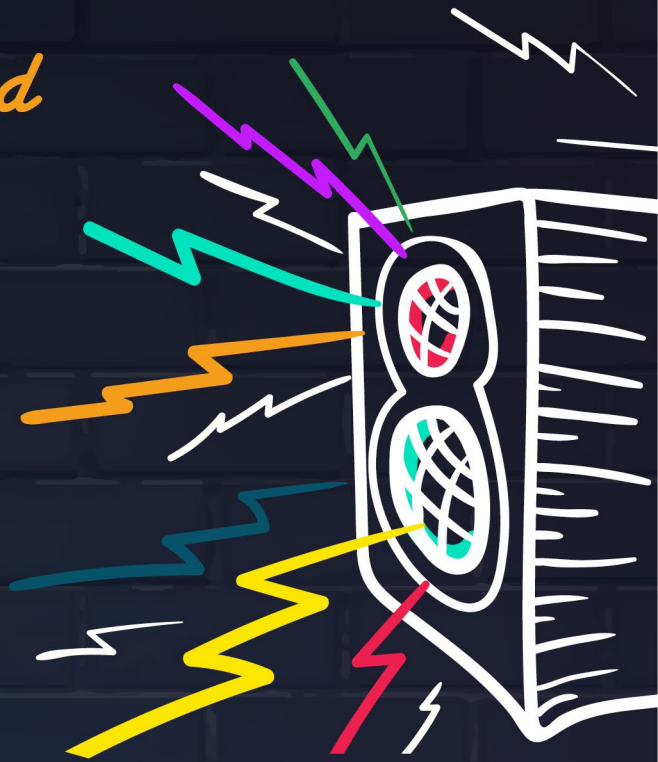
To become involved in the scheme and to become a Safe Space Venue follow these steps:

- 1 Register interest with It's in Nottingham by emailing bcrp@itsinnottingham.com
- 2 Agree and commit to all 8 Safe Space Pledges
- 3 Sign up to the Safe Space Pledge training sessions or complete the attached online course
- 4 Notify It's in Nottingham of completion of the staff training and which two staff have been nominated as the two VAWG venue Champions
- 5 A Safe Space Pledge resource pack will be sent to your venue
- 6 Your business will now be registered as an accredited Safe Space Pledge venue on the It's in Nottingham website

How the pledge is managed

The pledge is managed by It's in Nottingham, who audit premises and carry out regular checks on venues to ensure that information is on display and staff are adequately trained. This includes a yearly audit where venues can re-take the pledge and confirm that they are up to date with its requirements.

Mystery shoppers will also be used to anonymously audit spaces who have made the pledge. We welcome feedback from the public on premises signed up to the pledge.



Want to support the pledge but can't meet all the commitments?

We know that many venues will want to show their support for women's safety but might not be able to meet all the commitments of the pledge. It might be that your venue is too small to offer a physical safe space, you might not have enough staff to have two leads on this work or to send people on training.

That's okay – the Safe Space Pledge Supporters Scheme is for you. This will enable you to sign up to say that you are a supporter of the pledge messages and women's safety by following these steps:



- 1 Register interest with It's in Nottingham by emailing bcrp@itsinnottingham.com
- 2 Agree to support the Safe Space Pledge brand and commitment to achieving a safer City
- 3 Proudly display the Safe Space Pledge Supporter artwork and help promote the pledge wherever possible
- 4 Complete the online Safe Space Pledge training course
- 5 Know how to refer members of the public to help if they ask for it
- 6 Display the Safe Space Pledge Supporter window sticker within your venue window

Safe Space Pledge Pack

Every venue who signs up to the pledge will be given a Safe Space Pledge Pack, which will include lots of useful resources to help let people know that you promote the safety of women in your venue.

The pack includes:

- The Safe Space Pledge guide – to tell you all you need to know about the pledge
- Posters and other information you can display at your venue. This is a large resource enabling you to change posters as you need
- Access to the training package – free training for all your staff
- Registration on the It's in Nottingham website as an accredited venue
- Safe Space Pledge social media pack for Facebook, Instagram and Twitter



Support



For support with issues related to VAWG, sexual or domestic abuse or violence, the following organisations will be able to help you:

Sexual Violence or Abuse

The Topaz Centre (Sexual Assault Referral Centre):

(all genders aged 18+)

☎ 0800 085 9993 🌐 topazcentre.org



Nottinghamshire Sexual Violence Support Services:

(all genders aged 18+)

☎ 0115 941 0440 🌐 nottssvss.org.uk



East Midlands Children and Young People Sexual Assault Service:

(for all genders aged 0-17)

☎ 0800 183 0023 🌐 emcypsas.co.uk



Domestic Abuse

Juno Women's Aid (women):

☎ 0808 800 0340 🌐 junowomensaid.org.uk



Equation (men):

☎ 0800 995 6999 ✉ helpline@equation.org.uk

🌐 equation.org.uk/help-for-men



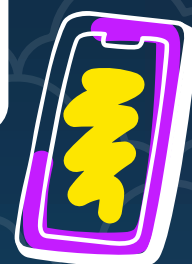
Stalking

Juno Helpline for Women:

☎ 0115 947 6490 🌐 junowomensaid.org.uk/stalking-advocacy-service/

Equation Helpline for Men:

☎ 0115 960 5556 🌐 equation.org.uk/service-for-men/stalking/



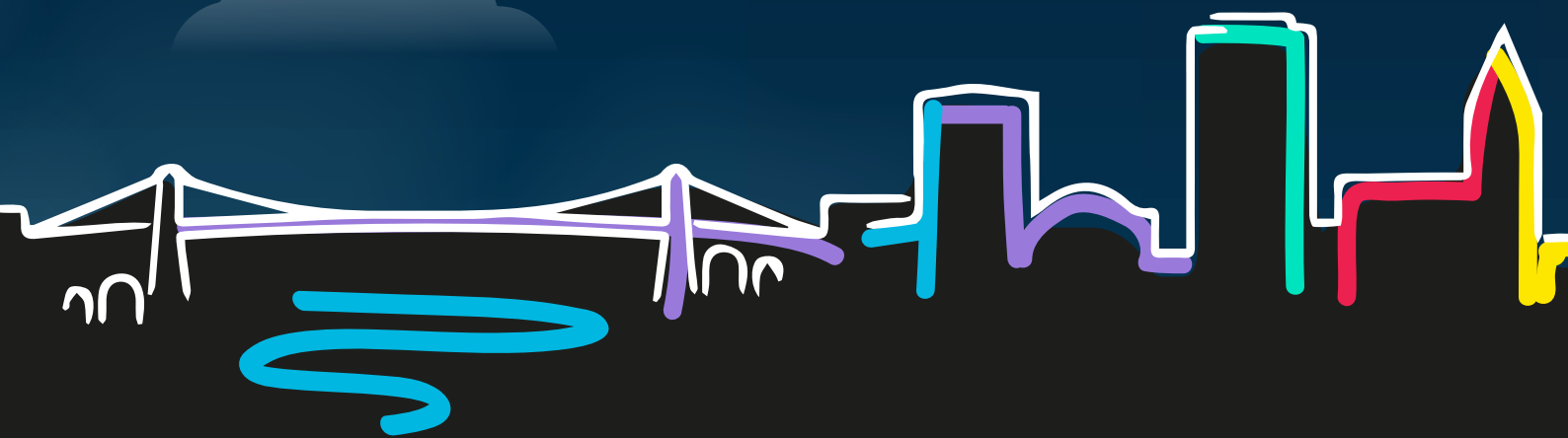
All the above services are LGBT inclusive.

Contact

Discover more city centre safety initiatives on the It's in Nottingham website.



For more information and resources on consent visit nottssvss.org.uk/consent-coalition



NOTTINGHAMSHIRE
POLICE & CRIME
COMMISSIONER

IT'S IN NOTTINGHAM

Consent
Coalition